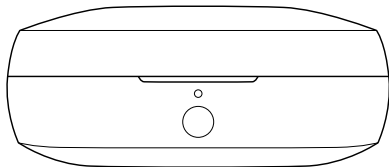
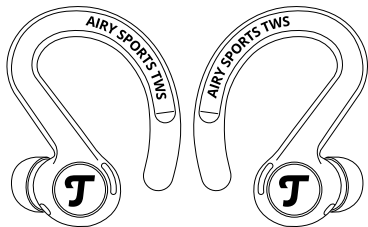


Teufel



manuals.teufelaudio.com

AIRY®

AIRY SPORTS TWS 2





Lieferumfang

Scope of delivery / Contenu de la livraison
Volumen de suministro / Ambito di consegna
Leveringsomvang / Zakres dostawy

Wireless Bluetooth Earphones
with charging case, USB-C charging cable

Kabellose Bluetooth-Kopfhörer
mit Ladeetui, USB-C Ladekabel

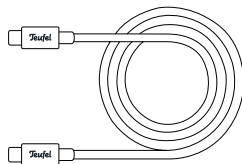
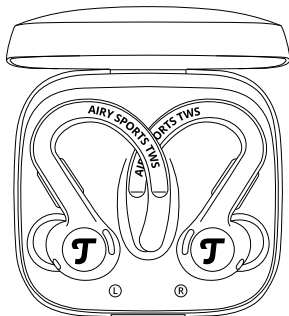
Écouteurs Bluetooth sans fil
avec étui de chargement, câble de chargement USB-C

Auriculares inalámbricos Bluetooth
con estuche de carga, cable de carga USB-C

Auricolari Bluetooth senza fili
con custodia di ricarica, cavo di ricarica USB-C

Draadloze Bluetooth-oortelefoons
met oplaadetui, USB-C oplaadkabel

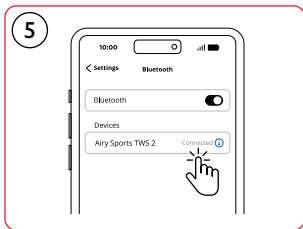
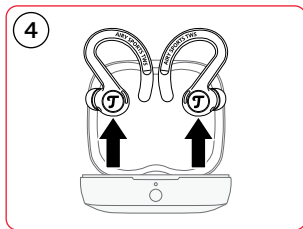
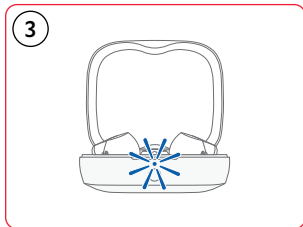
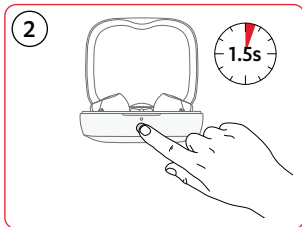
Bezprzewodowe słuchawki Bluetooth
z etui ładującym, kablem ładującym USB-C





Bluetooth® Verbindung

Bluetooth® connection / Connexion Bluetooth®
Conexión Bluetooth® / Collegamento Bluetooth®
Bluetooth® verbinding / Połączenie Bluetooth®



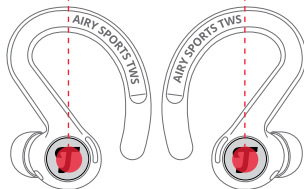


Bedienung

How to use / Utilisation /
Cómo utilizarlos / Utilizzo /
Gebruiken / Sposób użycia

Left Earpiece Playback Control

- ▶|| Play/Pause
- ◀◀ Previous Track
- ◀ [Volume Icon] ▶ Volume Down
- ⚙ Transparency On/Off



Right Earpiece Playback Controls

- ▶|| ● Play/Pause
- ▶▶ ●● Next Track
- ▶ [Volume Icon] ▶▶ Volume up
-)||- ●●● ANC On/Off

INTERACTION LEGEND

- | | | | |
|-----|------------|-----------------|------------------------|
| ● | Single Tap | [Volume Icon] ▶ | Tap, hold, and release |
| ●● | Double Tap | ◀ [Volume Icon] | Tap, hold, and release |
| ●●● | Triple Tap | | |



Bedienung

How to use / Utilisation /
Cómo utilizarlos / Utilizzo /
Gebruiken / Sposób użycia

Left Earpiece Playback Control

● ● 📞 📞 Accept/End call

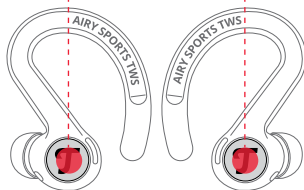
1.5 sec 📞✘ Reject call

Right Earpiece Call Controls

Accept/End call 📞 📞 ● ●

Reject call 📞✘ 1.5 sec

Switch Calls 📞🔄 ● ● ●



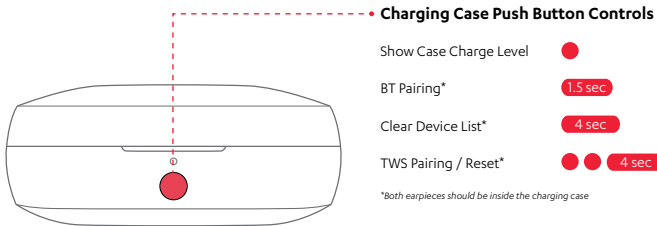
INTERACTION LEGEND

● Single Tap ● ● ● Triple Tap
● ● Double Tap 1.5 sec Middle Press



Bedienung

How to use / Utilisation /
Cómo utilizarlos / Utilizzo /
Gebruiken / Sposób użycia



INTERACTION LEGEND

●	Single Tap	● 1.5 sec	Middle Press
● ●	Double Tap	● ● 4 sec	Long Press

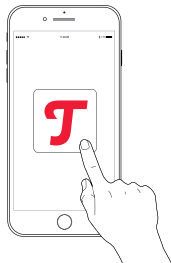


Teufel Headphone App

Teufel Headphone App / l'application Teufel Headphones /

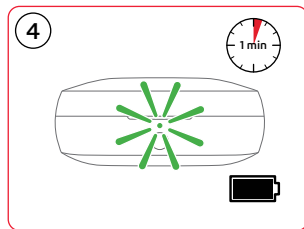
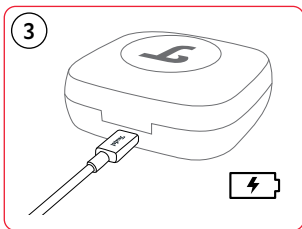
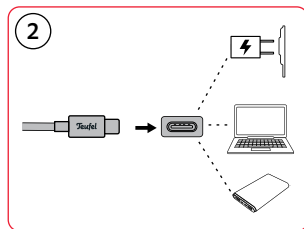
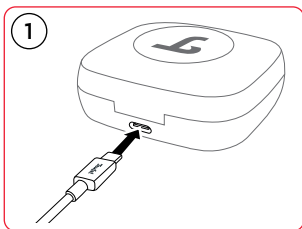
Teufel Headphone App / Teufel Headphone App /

Teufel Headphone App / Aplikacje Teufel Headphones





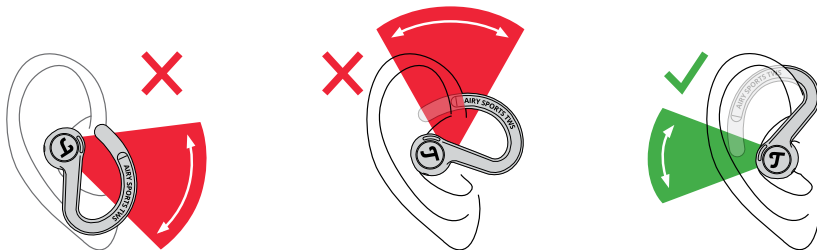
Aufladen
Charging / Charge /
Carga / Ricarica /
Opladen / Ładowanie





Erstmalige Ausrichtung der Kopfhörer

Initial alignment of the earphones / Premier alignement des écouteurs /
Alineación inicial de los auriculares / Allineamento iniziale degli auricolari /
Eerste uitlijning van de oortelefoons / Początkowe ustawienie słuchawek



Für ein optimales Klangerlebnis sollten die Kopfhörer so ausgerichtet werden, dass sich die Treiber vor der Öffnung des Gehörgangs befinden.

For an optimal sound experience, the earphones should be positioned so that the drives are in front of the openings of the ear canal.



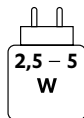
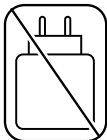
Technische Daten

Technical data / Caractéristiques techniques /

Datos técnicos / Dati tecnici /

Technische gegevens / Dane techniczne

Treibergröße Driver Size / Taille de haut-parleur / Tamaño del controlador / Dimensioni del driver / Driver afmeting / Rozmiar przetwornika	Ø 10 mm full-range driver
Akku Battery / Batterie / Batería / Batteria / Batterij / Bateria	Earphones (x2): Lithium-Ion, 3.7 V, 60 mAh Charging Case (x1): Lithium-Ion, 3.7 V, 750 mAh
Funknetz Radio network / Réseau radio / Red de radio / Rete radio / Radionetwerk / Sieć radiowa	Bluetooth®
Frequenzbänder in MHz Frequency bands in MHz / Bandes de fréquences en MHz / Bandas de frecuencia en MHz / Bande di frequenza in MHz / Frequentiebanden in MHz / Pasma częstotliwości w MHz	2.400 MHz - 2.4835 MHz
Übertragungsleistung in mW/dBm Transmission power in mW/dBm / Puissance de transmission en mW/dBm / Potencia de transmisión en mW/dBm / Potenza di trasmissione in mW/dBm / Zendvermogen in mW/dBm / Moc transmisji w mW/dBm	< 10 mW / 10 dBm
USB-Ladeleistung USB Charging Power / Alimentation de charge USB/ Alimentación de carga por USB/ Potenza ricarica USB/ USB-oplaadvermogen/ Moc ładowania USB	5 V 1 A



Trademarks

© All trademarks and brand names are the property of their respective owners. Apple, iOS and Siri are trademarks of Apple Inc., registered in the U.S. and other countries.

Android and Google Assistant are trademarks of Google LLC.

The Bluetooth® word mark and logos are registered trademarks owned by the Bluetooth SIG, Inc. and any use of such marks by Lautsprecher Teufel GmbH is under license.

Qualcomm aptX is a product of Qualcomm Technologies, Inc. and/or its subsidiaries. Qualcomm is a trademark of Qualcomm Incorporated, registered in the United States and other countries. aptX is a trademark of Qualcomm Technologies International, Ltd., registered in the United States and other countries.

Other trademarks and trade names are those of their respective owners. You can find further technical data on our website. Technical changes reserved!

Teufel

Lautsprecher Teufel GmbH

Budapester Str. 44
10787 Berlin
Germany

teufelaudio.com
teufel.de
teufel.ch
teufelaudio.at
teufelaudio.nl

teufelaudio.be
teufelaudio.fr
teufelaudio.pl
teufelaudio.it
teufelaudio.es

Telefon/Phone

Deutschland	+49 (0)30 217 84 217
Österreich	+43 12 05 22 3
Schweiz	+41 43 50 84 08 3
International	00800 200 300 40 (toll- free)

Online-Support

teufelaudio.com/support
teufel.de/support

Kontaktformular/Contact

teufel.de/kontakt
teufelaudio.com/contact



Hereby, Lautsprecher Teufel GmbH declares that the radio equipment type Airy Sports TWS 2 is in compliance with Directive 2014/53/EU. The full text of the EU declaration of conformity is available at the following internet address:

teufel.de/konformitaetserklaerungen
teufelaudio.com/declaration-of-conformity