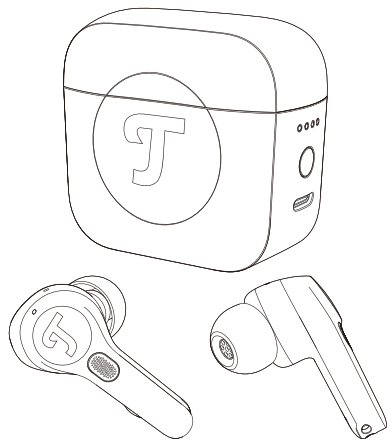
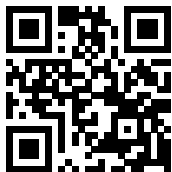


Teufel



AIRY[®]
AIRY TWS PRO



manuals.teufelaudio.com





Lieferumfang

Scope of delivery / Contenu de la livraison /
Volumen de suministro / Ambito di consegna /
Leveringsomvang / Zakres dostawy

Kabellose Bluetooth-Kopfhörer mit Li-Ionen-Akku

Wireless Bluetooth Earphones with Li-Ion battery

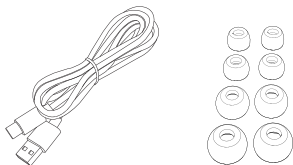
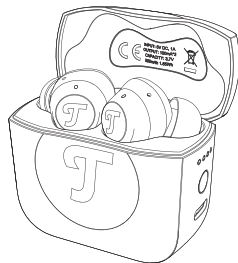
Écouteurs sans fil Bluetooth avec batterie Li-Ion

Auriculares inalámbricos Bluetooth con batería de iones de litio

Auricolari wireless Bluetooth con batteria agli ioni di litio

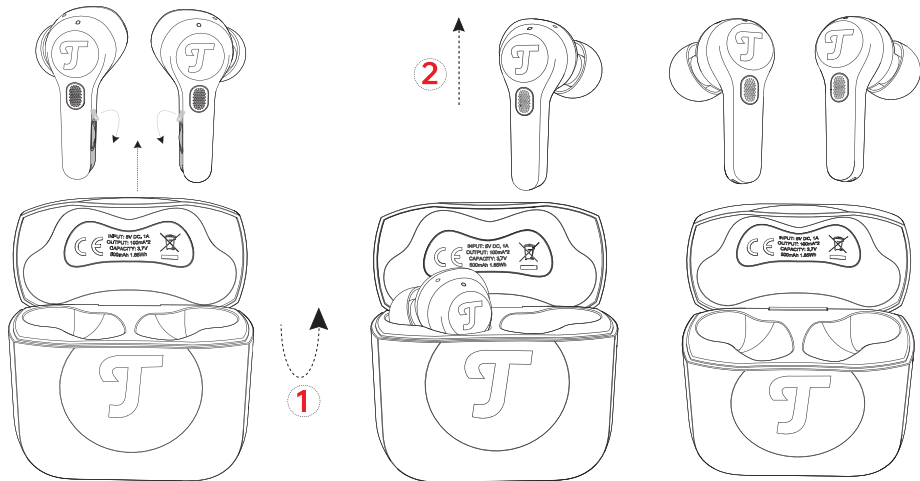
Draadloze Bluetooth-oordopjes met Li-Ion-batterij

Bezprzewodowe słuchawki Bluetooth z litowo-jonową baterią





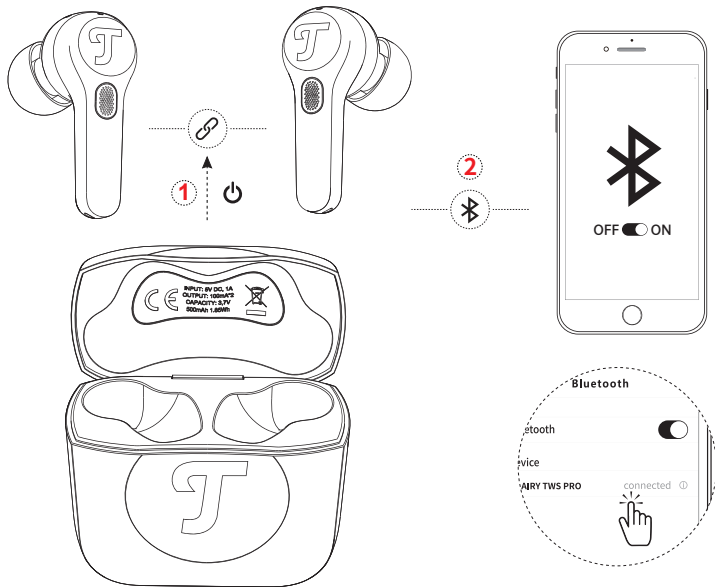
Vor dem Gebrauch
Before use / Avant l'utilisation /
Antes del uso / Prima dell'uso /
Alvorens ingebruikname / Przed użyciem





Erstmalige Bluetooth® Verbindung

Initial Bluetooth® connection / Première connexion Bluetooth® /
Conexión Bluetooth® inicial / Connessione Bluetooth® iniziale /
Inițiële Bluetooth®-verbinding / Wstępne połączenie Bluetooth®





Bedienung

How to use / Utilisation /
Cómo utilizarlos / Utilizzo /
Gebruiken / Sposób użycia

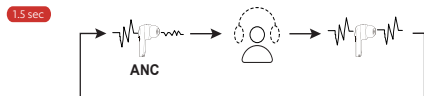
Playback Controls L/R



Phone Call L/R



ANC & Transparency Mode L/R



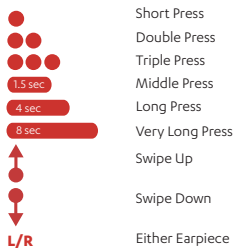
Volume Up Down



Press Operation



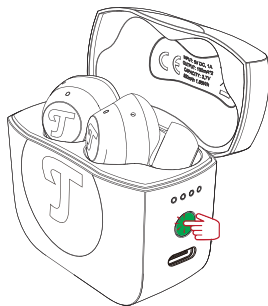
INTERACTION LEGEND




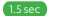




Bluetooth® Verbindung & Bedienung


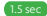
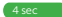

Bluetooth® connection & How to use / Connexion Bluetooth® & Utilisation /
Conexión Bluetooth® & Cómo utilizarlos / Collegamento Bluetooth® & Utilizzo /
Bluetooth® verbinding & Gebruiken / Połączenie Bluetooth® & Sposób użycia



Charging Case Button

-  Battery status
-  1.5 sec BT pairing
-  4 sec Clear device list
-  8 sec TWS Pairing

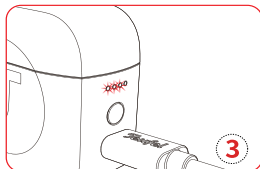
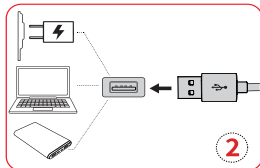
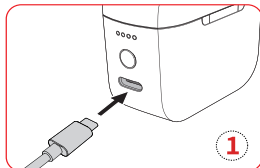
INTERACTION LEGEND

-  Short Press
-  1.5 sec Middle Press
-  4 sec Long Press
-  8 sec Very Long Press

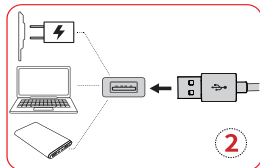
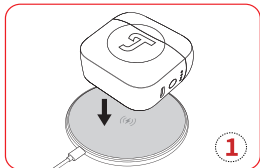


Aufladen
Charging / Charge /
Carga / Ricarica /
Opladen / Ładowanie

A



B





Platzierung im Ohr

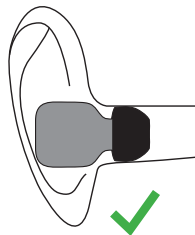
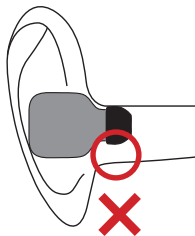
Placement in ear / Placement dans l'oreille /

Colocación en el oído / Posizionamento nell'orecchio /

Plaatsing in het oor / Umieszczanie w uchu



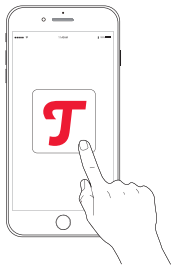
XL - XS





Teufel Headphone App

Teufel Headphone App / l'application Teufel Headphones /
Teufel Headphone App / Teufel Headphone App /
Teufel Headphone App / Aplikacje Teufel Headphones





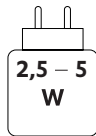
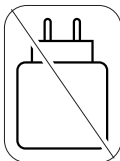
Technische Daten

Technical data / Caractéristiques techniques /

Datos técnicos / Dati tecnici /

Technische gegevens / Dane techniczne

Treibergröße Driver Size / Taille de haut-parleur / Tamaño del controlador / Dimensioni del driver / Driver afmeting / Rozmiar przetwornika	Ø10 mm full range
Akku Battery / Batterie / Batería / Batteria / Batterij / Bateria	Earbuds (x2): Lithium-Ion, 3.7 V, 50 mAh Charging Case (x1): Lithium-Ion, 3.7 V, 500 mAh
Funknetz Radio network / Réseau radio / Red de radio / Rete radio / Radionetwerk / Sieć radiowa	Bluetooth®
Frequenzbänder in MHz Frequency bands in MHz / Bandes de fréquences en MHz / Bandas de frecuencia en MHz / Bande di frequenza in MHz / Frequentiebanden in MHz / Pasma częstotliwości w MHz	2400 – 2483.5
Übertragungsleistung in mW/dBm Transmission power in mW/dBm / Puissance de transmission en mW/dBm / Potencia de transmisión en mW/dBm / Potenza di trasmissione in mW/dBm / Zendvermogen in mW/dBm / Moc transmisji w mW/dBm	< 10 mW/< 10 dBm
USB-Ladeleistung USB Charging Power / Alimentation de charge USB/ Alimentación de carga por USB/ Potencia recarga USB/ USB-oplaadvermogen/ Moc ładowania USB	5 V 1 A



Trademarks

©All trademarks and brand names are the property of their respective owners.

Bluetooth® is a registered trademark of the Bluetooth SIG, Inc.

Qualcomm® aptX™ and Qualcomm® aptX™ HD are products of Qualcomm Technologies International, Ltd.

Qualcomm® is a trademark of Qualcomm Incorporated, registered in the U.S. and other countries.

aptX™ is a trademark of Qualcomm Technologies International, Ltd. registered in the U.S. and other countries.

Other trademarks and trade names are those of their respective owners.

Teufel

Lautsprecher Teufel GmbH

Budapester Str. 44

10787 Berlin

Germany

teufelaudio.com

teufel.de

teufel.ch

teufelaudio.at

teufelaudio.nl

teufelaudio.be

teufelaudio.fr

teufelaudio.pl

teufelaudio.it

teufelaudio.es

Telefon/Phone

Deutschland +49 (0)30 217 84 217

Österreich +43 12 05 22 3

Schweiz +41 43 50 84 08 3

International 00800 200 300 40 (toll- free)

Online-Support

teufelaudio.com/support

teufel.de/support

Kontaktformular/ Contact

teufel.de/kontakt

teufelaudio.com/contact



Hereby, Lautsprecher Teufel GmbH declares that the radio equipment type AIRY TWS PRO is in compliance with Directive 2014/53/EU. The full text of the EU declaration of conformity is available at the following internet address:

teufel.de/konformitaetserklaerungen

teufelaudio.com/declaration-of-conformity