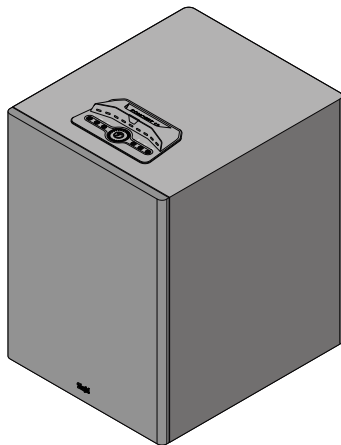


Teufel



CONCEPT CONCEPT 12

Active subwoofer



www.teufelaudio.com/concept-12





Lieferumfang

Scope of delivery / Contenu de la livraison
Volumen de suministro / Ambito di consegna
Leveringsomvang / Zakres dostawy

Aktiv-Subwoofer
mit 230V Netzanschluss

Active subwoofer
with 230V mains connection

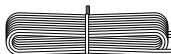
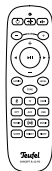
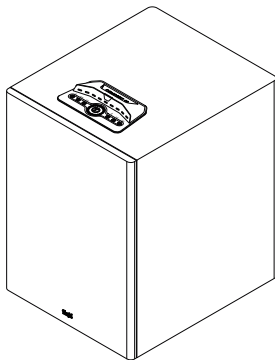
Subwoofer actif
avec raccordement au réseau 230V

Subwoofer activo
con conexión a la red de 230 V

Subwoofer attivo
con collegamento alla rete elettrica a 230V

Actieve subwoofer
met 230V netaansluiting

Aktywny subwoofer
z przyłączem sieciowym 230V



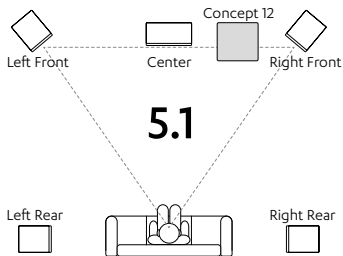


Lautsprecher-Setup

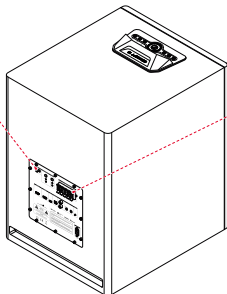
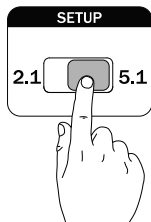
Room setup / Positionnement des haut-parleurs

Instalación de altavoces / Posizionamento degli altoparlanti

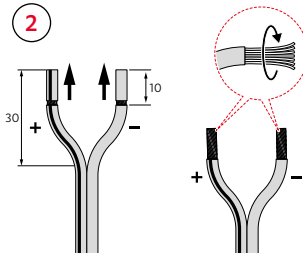
Luidspreker Installatie / Ustawienie głośników



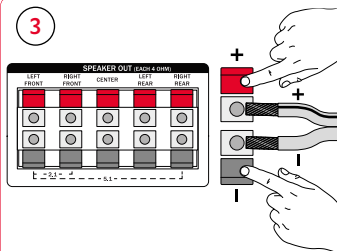
1



2



3



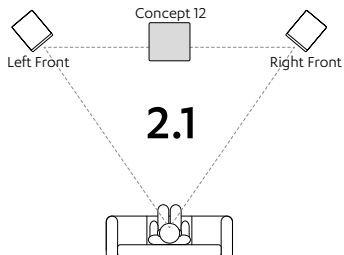


Lautsprecher-Setup

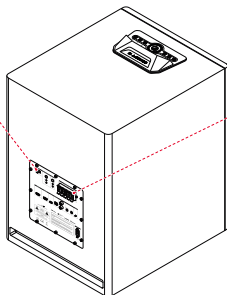
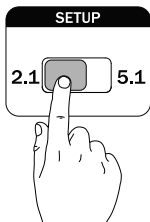
Room setup / Positionnement des haut-parleurs

Instalación de altavoces / Posizionamento degli altoparlanti

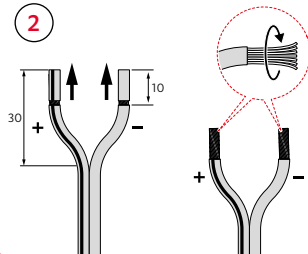
Luidspreker Installatie / Ustawienie głośników



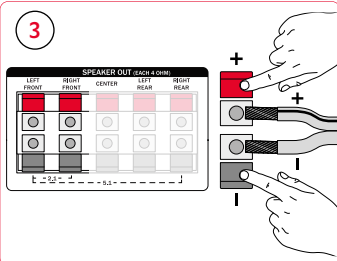
1



2

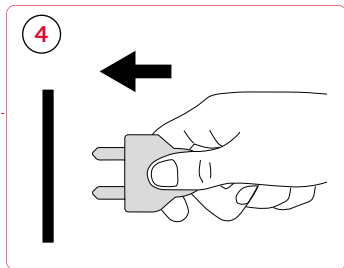
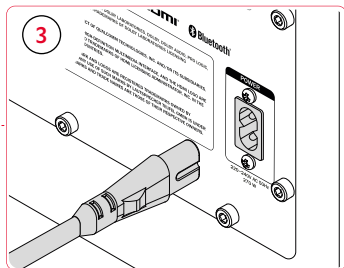
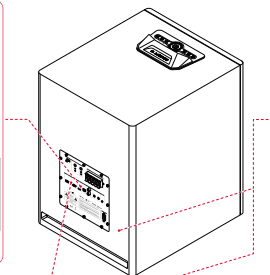
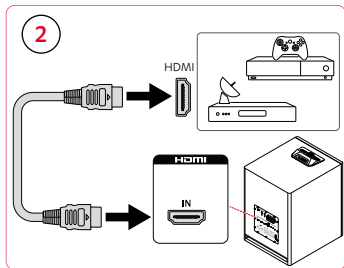
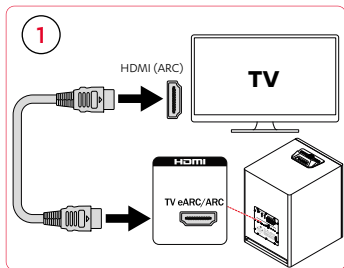


3





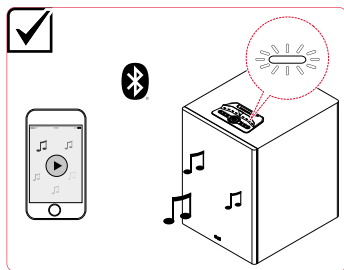
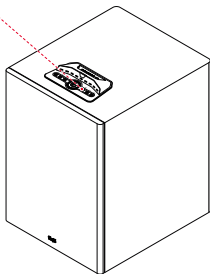
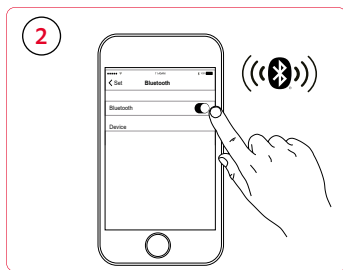
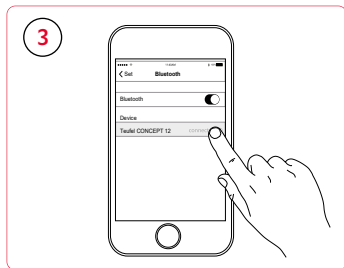
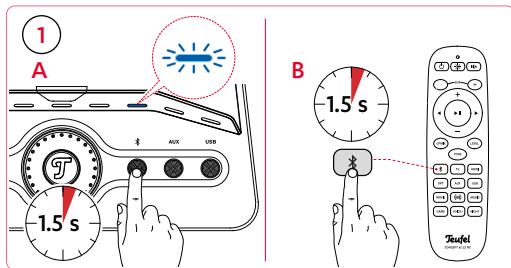
Anschließen
Connect / Connector
Conectar / Collegare
Verbinden / Połączenie





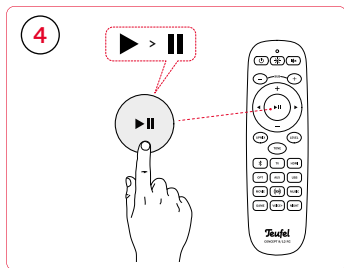
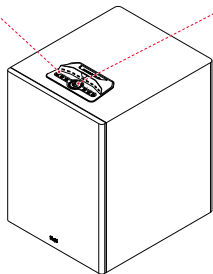
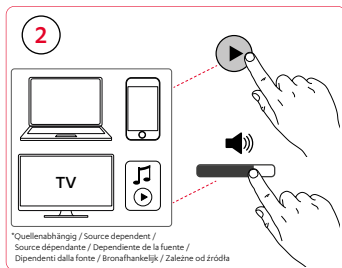
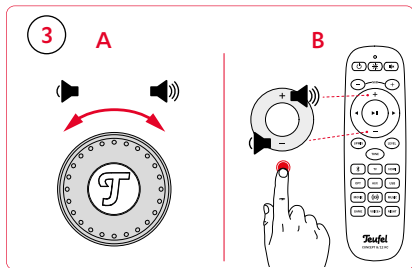
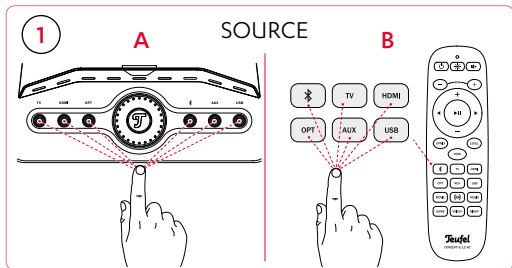
Bluetooth® Verbindung

Bluetooth® connection / Connexion Bluetooth®
Conexión Bluetooth® / Collegamento Bluetooth®
Bluetooth® verbindung / Połączenie Bluetooth®

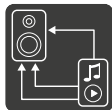




Lautstärke und Wiedergabe
Volume and playback / Volume et lecture
Volumen y reproducción / Volume e riproduzione
Volume en afspelen / Głośność i odtwarzanie



*Quellenabhängig / Source dependent /
Source dépendante / Dependiente de la fuente /
Dipendenti dalla fonte / Bronafhankelijk / Zależne od źródła



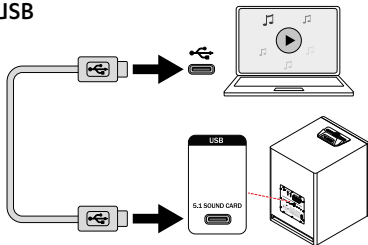
Anschlussarten

Connection types / Types de connexion

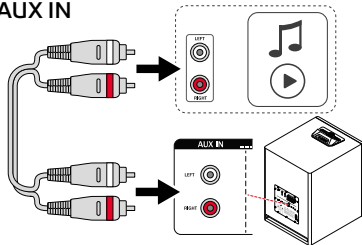
Tipos de conexión / Tipi di connessione

Typen verbinden / Typy połączeń

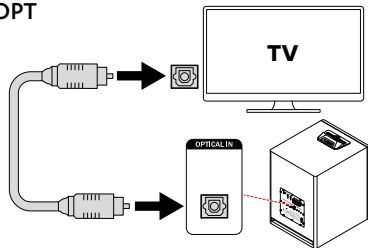
USB



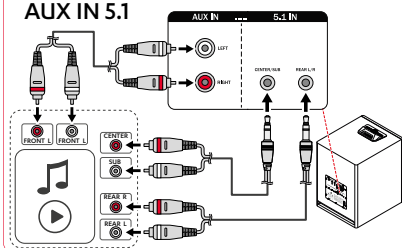
AUX IN



OPT



AUX IN 5.1





Technische Daten

Technical data / Données techniques

Datos técnicos / Dati tecnici

Technische gegevens / Dane techniczne

Abmessungen (B x H x T) /

Dimensions (W x H x D) / Dimensions (L x H x P) / Dimensiones (An x Al x P) / Dimensioni (L x A x P) / Afmetingen (b x h x d) / Wymiary (szer. x wys. x gł.)

410 mm x 590 mm x 480.5 mm

Gewicht /

Weight / Poids / Peso / Peso / Gewicht / Masa

27.66 kg

Netzspannung /

Mains voltage / Tension secteur / Tensión de red / Tensione di rete / Netspanning / Napięcie sieciowe

220-240 V AC / 50 Hz

Betriebs-Temperatur (von-bis) /

Operating temperature (from - to) / Température de fonctionnement (de - à) / Temperatura de funcionamiento (de - a) / Temperatura d'esercizio (da - a) / Bedrijfstemperatuur (van - tot) / Temperatura otoczenia podczas pracy (od - do)

0 °C – +45 °C

Lager-Temperatur /

Storage temperature (from - to) / Température de stockage (de - à) / Temperatura de almacenamiento (de - a) / Temperatura di conservazione (da - a) / Opslagtemperatuur (van - tot) / Temperatura przechowywania (od - do)

-20 °C – +65 °C

Frequenzbänder /

Frequency bands / Bande de fréquences / Potencia de transmisión / Bande di frequenza / Frequentiebanden / Pasma częstotliwości

2400–2483.5 MHz

Sendeleistung /

Transmitting power / Puissance d'émission / Potencia de transmisión / Potenza di trasmissione / Zendervermogen / Moc nadawcza

9.2 dBm / 8.3 mW

Trademarks

© All trademarks are the property of their respective owners and any use by Lautsprecher Teufel is under licence.



Bluetooth® is a registered trademark of the Bluetooth SIG, Inc.



DTS, the Symbol, and DTS and the Symbol together are registered trademarks of DTS, Inc.

For DTS patents, see <http://patents.dts.com>.

Manufactured under licence from DTS, Inc. or DTS Licensing Limited.

DTS, Digital Surround and the DTS logo are registered trademarks or trademarks of DTS, Inc. in the United States and other countries.

© 2021 DTS, Inc. ALL RIGHTS RESERVED.



Dolby, Dolby Audio, and the double-D symbol are trademarks of Dolby Laboratories Licensing Corporation. Manufactured under license from Dolby Laboratories.



The terms HDMI, HDMI High-Definition Multimedia Interface, HDMI trade dress and the HDMI logos are trademarks or registered trademarks of HDMI Licensing Administrator, Inc.



Qualcomm aptX is a product of Qualcomm Technologies International, Ltd. Qualcomm is a trademark of Qualcomm Incorporated, registered in the U.S. and other countries, use has been authorised.

aptX is a trademark of Qualcomm Technologies International, Ltd., registered in the U.S. and other countries, use of which has been authorised.



Hereby, Lautsprecher Teufel GmbH declares that the radio equipment type CONCEPT 12 is in compliance with Directive 2014/53/EU. The full text of the EU declaration of conformity is available at the following internet address:

www.teufel.de/konformitaetserklaerungen

www.teufelaudio.com/declaration-of-conformity

Teufel

Lautsprecher Teufel GmbH

Bikini Berlin, Budapester Str. 44
10787 Berlin (Germany)

www.teufelaudio.com

www.teufel.de

www.teufel.ch

www.teufelaudio.at

www.teufelaudio.nl

www.teufelaudio.be

www.teufelaudio.fr

www.teufelaudio.pl

www.teufelaudio.it

www.teufelaudio.es

Telefon

Deutschland +49 (0)30 217 84 217

Österreich +43 12 05 22 3

Schweiz +41 43 50 84 08 3

International 0800 200 300 40 (toll- free)

Telefax

+49 (0)30 / 300 930 930

Online-Unterstützung

www.teufel.de/service

Kontaktformular

www.teufel.de/kontakt

Online support

www.teufelaudio.com/service

Contact

www.teufelaudio.com/contact