

Debut S
Debut S Phono
Setup Guide

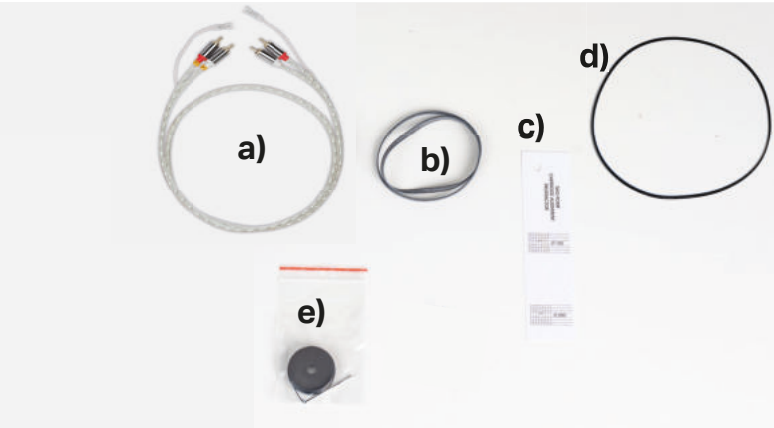


Start with this side

- > Getting started:
- Make sure to have enough space to unpack your turntable.
 - Always unpack and set up in a clean enviroment.
 - Please Do NOT throw away the packaging! If you need service or want to return your product, please send them in the original packaging including all inserts. In case of any damage in another packaging your dealer cannot guarantee a full refund.

1 Unpack all items from accessory bag.

- a) Connect it E – RCA cable
- b) Standard flat belt for 33/45 RPM
- c) Cartridge alignment protractor
- d) Round belt for 78 RPM
- e) Adapter for 7" singles, Allen key 1.5mm for azimuth setting



2 Remove dust cover carton from the box.



3 Lift the wrapped turntable out of the box.



4 Carefully remove the protection covering.



5 Unpack the counterweight.



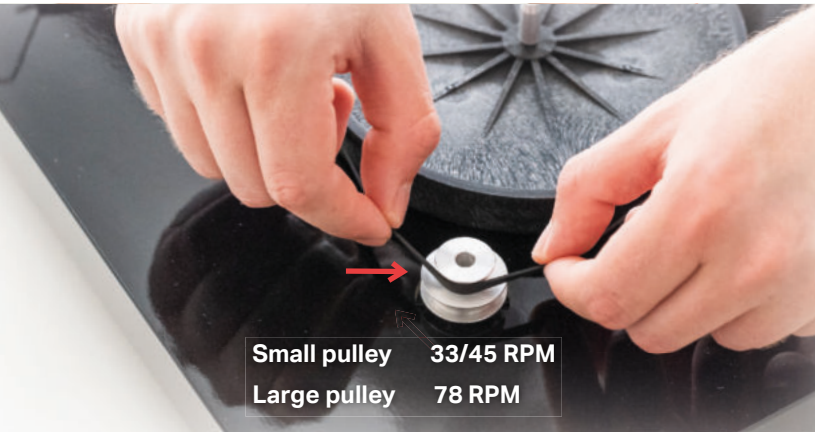
6 Unpack the power supply.



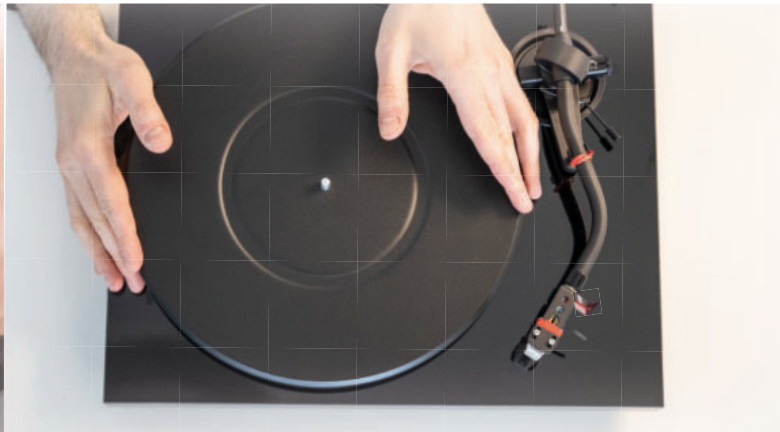
7 Unpack the platter.



8 Put the flat drive belt on the small pulley and sub-platter.



9 Put the platter on the turntable.



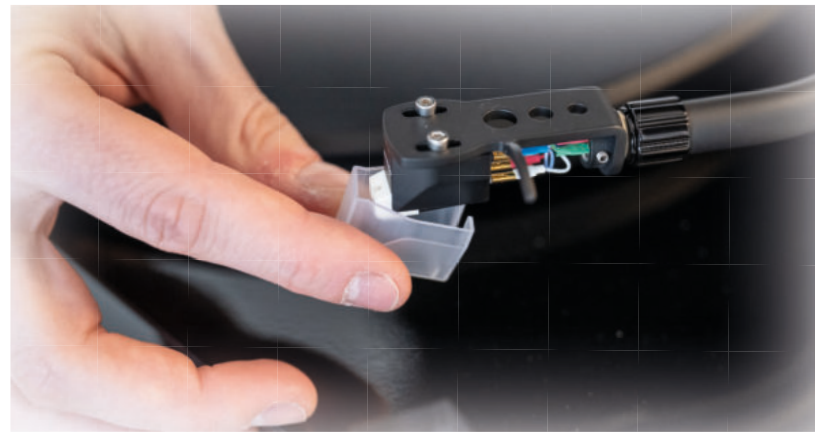
10 Remove tonearm twist tie.



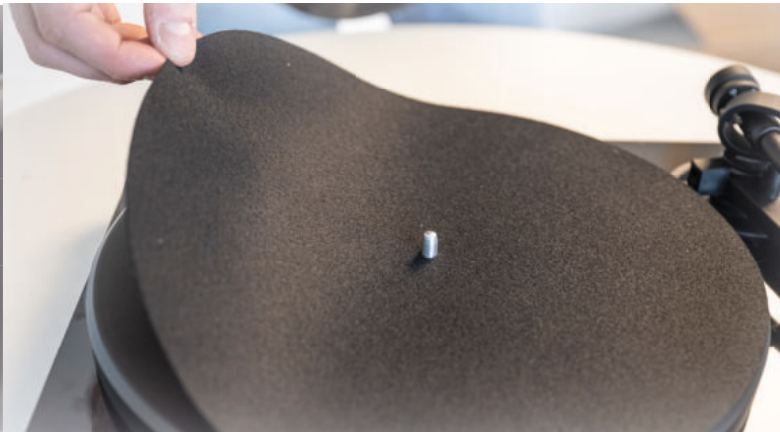
11 Screw the counterweight in place.



12 Remove the stylus protection cover.



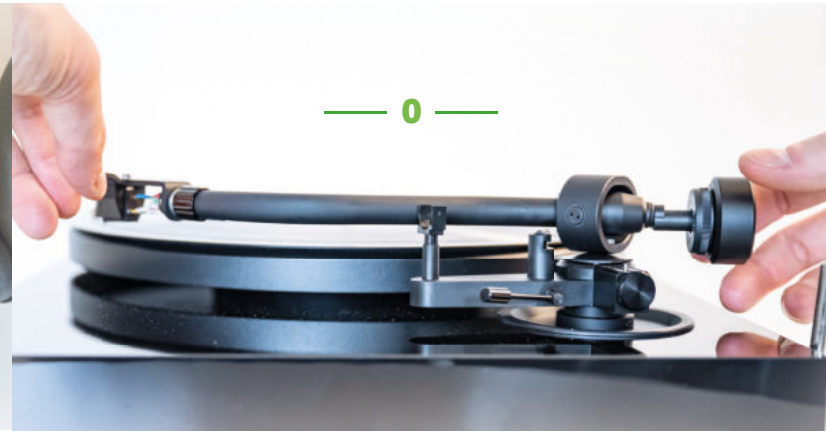
13 Put the felt mat on the platter.



14 Put a record on the platter and place the tonearm between platter and armrest.



15 Balance the tonearm so it stays level by turning the counterweight forwards and backwards on the rod.



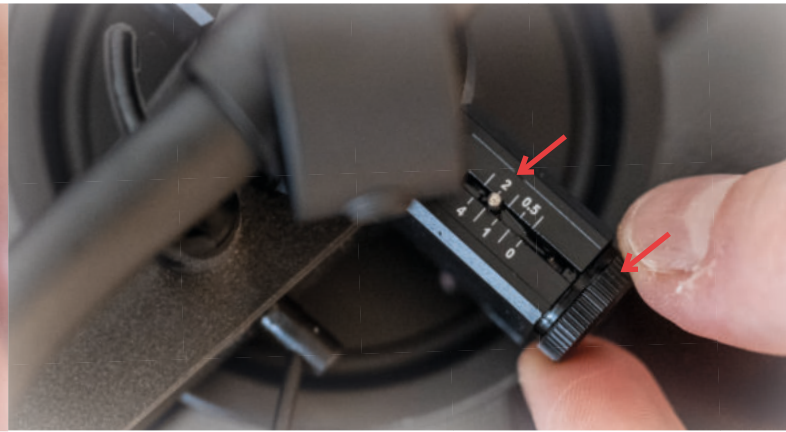
16 Turn the front dial of the counterweight (not the whole weight) so the '0' is in line with marker at the back of the tonearm.



17 Turn the whole counterweight counter-clockwise until the scale reads 18 - 20.



18 Set the Anti Skating Force scale to 2.



19 Unpack dust cover and put it on the turntable.



20 Plug in power supply.



21 Use the rocker switch on the bottom left to select the playback speed.



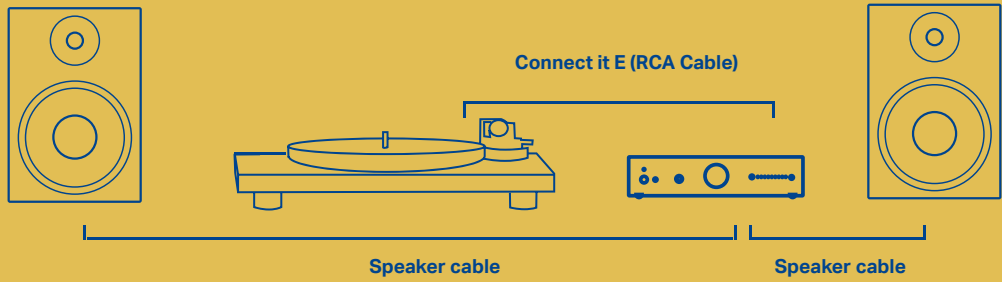
22 How to connect + possible setup on the backside of this sheet.



How to connect your turntable:

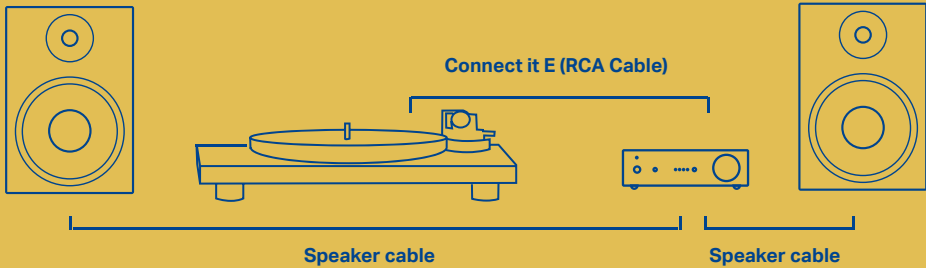
Debut S

Connect to any amp with integrated phono amplifier or use an external phono preamp. Connect it E (RCA cable) included. Possible set: Pro-Ject Speaker Box 5 (bookshelf speaker) and Pro-Ject MaiA S3 (stereo integrated amplifier).



Debut S Phono

Select **Line Out** to connect to an amplifier without a phono stage. Select **Phono Out** if you have an amplifier with a phono stage. Possible set: Pro-Ject Speaker Box 5 (bookshelf speaker) and Pro-Ject Stereo Box S3 BT (stereo integrated amplifier).



23 Have fun with music!
(Remove dust cover for best playback experience.)



Need help?
Feel free to contact us. We have experienced partners
all over the world. Find your dealer here:
www.project-audio.com/en/find-a-dealer/

Service
Should you encounter a problem which you are not able to alleviate or identify despite the above information, please contact your dealer for further advice. Only when the problem cannot be resolved there should the unit be sent to the responsible distributor in your country. Warranty repairs will only be affected if the unit is returned correctly packaged. For this reason we recommend keeping the original packaging. Never return a record player without making sure that it is safely disassembled and correctly packaged in the original packaging according to the diagrams on the last page of this user guide. Please remove these parts and pack them separately: lid, counterweight, anti-skating weight and belt. Fit the cartridge protection cap and the transport lock for the tonearm tube, prior to carefully packaging the record player.

Warranty
The manufacturer accepts no responsibility for damage caused by not adhering to these instructions for use and/or by transportation without the original packaging. Modification or change to any part of the product by unauthorized persons, release the manufacturer from any liability over and above the lawful rights of the customer.

Warranty: Terms and Conditions

- A warranty is valid only for products purchased from an authorized Pro-Ject Audio Systems retailer or dealer.
- This warranty offer is limited to the repair of the equipment (which could be a repair or replacement at our discretion, neither of which affects your original warranty).
- Neither transportation or any other costs, nor any risk for removal, transportation and installation of products is covered by this warranty.
- A warranty is only valid for the original owner. It is not transferable.
- To validate your warranty, you will need to provide the original sales invoice or other proof of ownership and date of purchase.
- Warranty must be claimed within two years of purchase from an authorized dealer. After this period of time, the warranty will expire.
- The legal warranty obligation exists in addition to this warranty and is not limited by this warranty.

A Pro-Ject Audio Systems warranty relates to claims of defects in materials and/or workmanship at the time of purchase. It does not cover:

- Deterioration of component parts, the nature of which is to become worn or depleted with use, such as batteries and headphone ear pads, drive belts and cartridges.
- Damages caused by incorrect installation, connection or packing.
- Damages caused by any use other than the correct use described in the user manual, negligence, modifications, or use of parts that are not made or authorized by Pro-Ject Audio Systems.
- Damages caused by faulty or unsuitable ancillary equipment.
- Damages caused by accidents, lightning, water, fire heat, war, public disturbances or any other cause beyond the reasonable control of Pro-Ject Audio Systems and its appointed distributors.
- Products where the serial number has been altered, deleted, removed or made illegible.
- Repairs or modifications that have been executed by an unauthorized person.

Commercial Use
Faults caused due to using domestic products in commercial environments or on commercial scales are not covered by warranty. This turntable is intended for domestic use only. Using them for business applications are done so at your own risk.

Pro-Ject Audio Systems is a Registered Trademark of H. Lichtenegger.

This guide was produced by: Pro-Ject Audio Systems
Copyright © 2023. All rights reserved.

The information, pictures and figures were correct at the time of going to press. The manufacturer reserves the right to make changes to the technical specification without prior notice as deemed necessary to uphold the ongoing process of technical development.