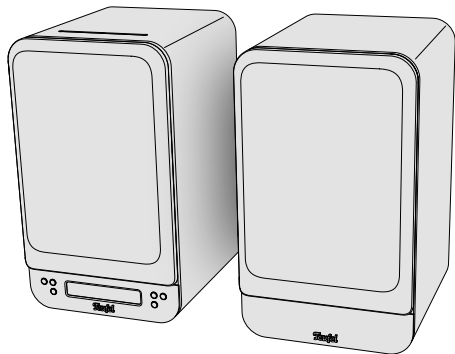


Teufel



www.teufelaudio.com/ultima-25-aktiv

ULTIMA 25 AKTIV





Lieferumfang

Scope of delivery / Contenu de la livraison
Volumen de suministro / Ambito di consegna
Leveringsomvang / Zakres dostawy

Aktiv-Lautsprecher-Set mit Netzanschluss

Active speaker set
with mains connection

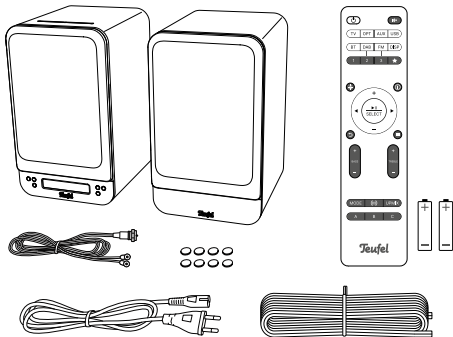
Kit d'enceintes actives
avec raccordement au réseau

Conjunto de altavoces activos
con conexión a la red

Set di altoparlanti attivi
con collegamento alla rete

Actieve luidspreker set
met netaansluiting

Aktywny zestaw głośnikowy
z przyłączem sieciowym





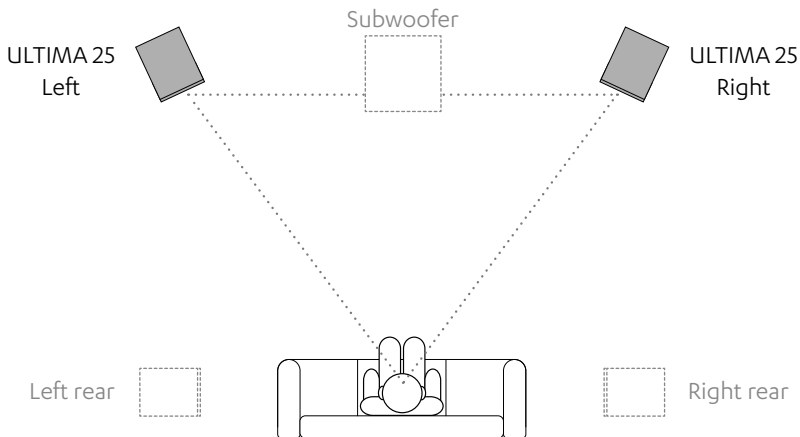
Lautsprecher-Setup

Room setup / Positionnement des haut-parleurs

Instalación de altavoces / Posizionamento degli altoparlanti

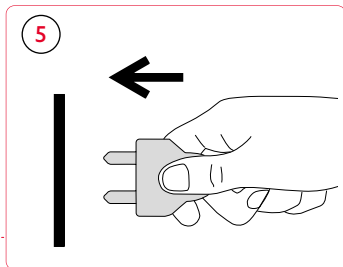
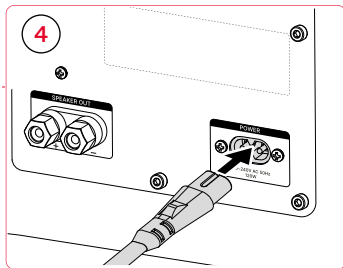
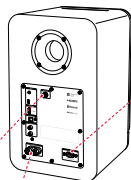
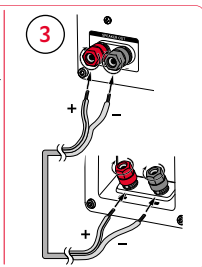
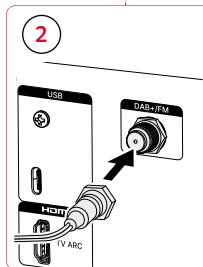
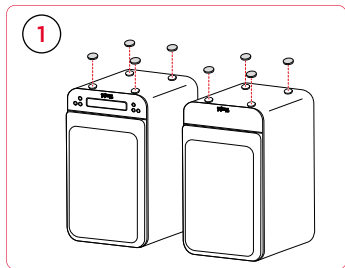
Luidsprekeropstelling / Ustawienie głośników

STEREO / HOME CINEMA





Anschließen
Connect / Connector
Conectar / Collegare
Verbinden / Połączenie





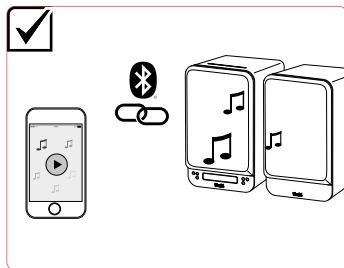
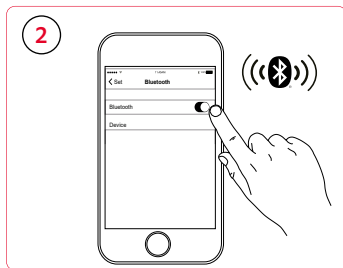
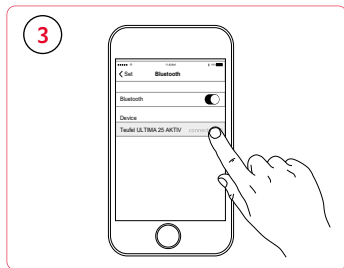
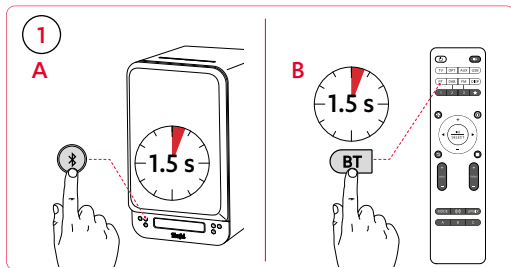
Radio (DAB+/FM)
Radio (DAB+/FM) / Radio (DAB+/FM)
Radio (DAB+/FM) / Radio (DAB+/FM)
Radio (DAB+/FM) / Radio (DAB+/FM)

<p>1</p> <p>RADIO (DAB+)</p> <p>A</p> <p>/> BT (✕) > Aux > Optical > FM > DAB > USB</p>	<p>B</p>	<p>2</p> <p>SELECT STATION</p> <p>A PREV NEXT </p> <p>B PREV NEXT </p>
<p>1</p> <p>RADIO (FM)</p> <p>A</p> <p>TV > BT (✕) > Aux > Optical > FM > DAB > USB</p>	<p>B</p>	<p>2</p> <p>SELECT STATION</p> <p>A -0.05 MHz +0.05 MHz </p> <p>B -0.05 MHz +0.05 MHz </p>



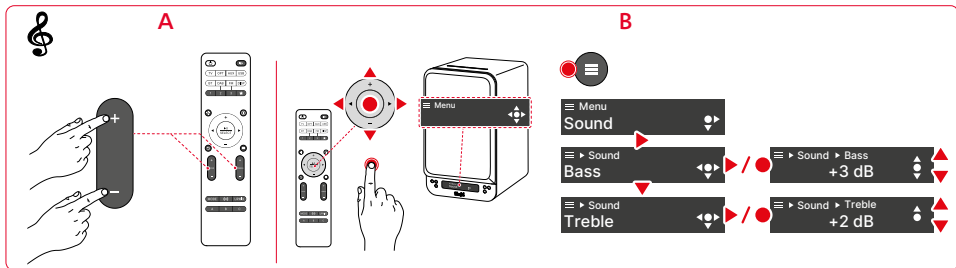
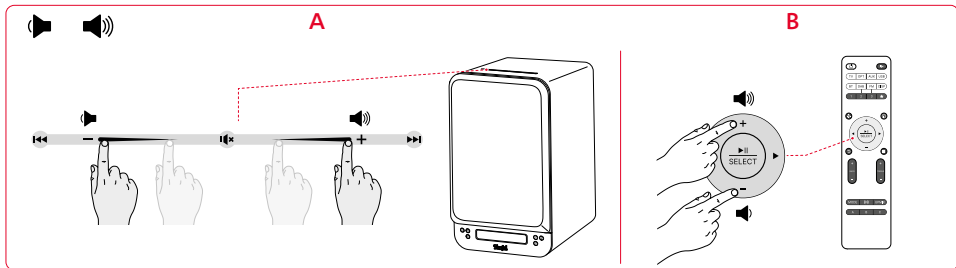
Bluetooth® Verbindung

Bluetooth® connection / Connexion Bluetooth®
Conexión Bluetooth® / Collegamento Bluetooth®
Bluetooth® verbindung / Połączenie Bluetooth®





Lautstärke und Klang
Volume and sound / Volume et son
Volumen y sonido / Volume e suono
Volume en geluid / Głośność i dźwięk





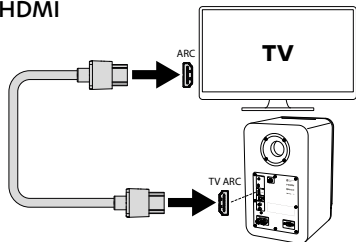
Anschlussarten

Connection types / Types de connexion

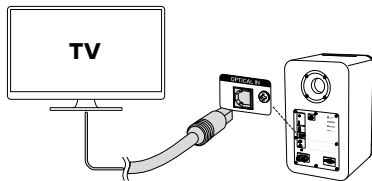
Tipos de conexión / Tipi di connessione

Typen verbinden / Typy połączeń

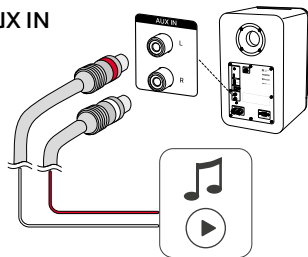
HDMI



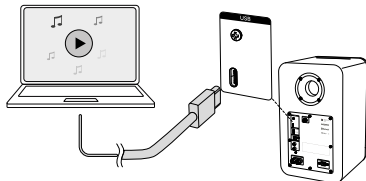
OPT



AUX IN



USB



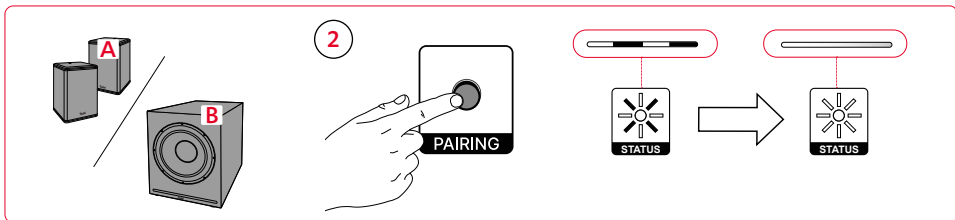
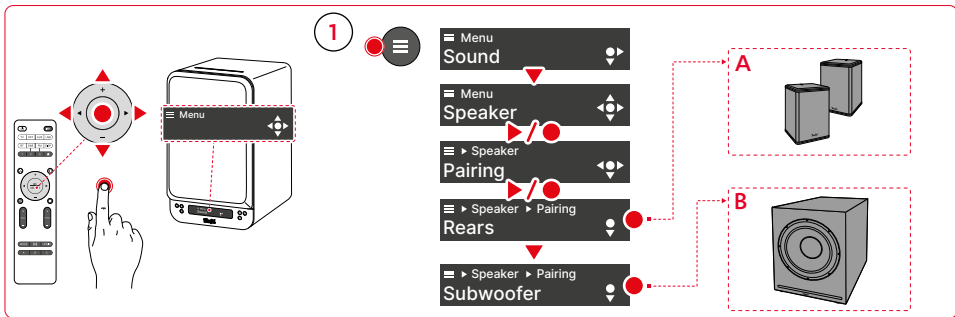


Home Cinema Setup

Home cinema setup / Positionnement des haut-parleurs

Instalación de altavoces / Posizionamento degli altoparlanti

Luidsprekeropstelling / Ustawienie głośników





Technische Daten

Technical data / Données techniques

Datos técnicos / Dati tecnici

Technische gegevens / Dane techniczne

Abmessungen (B x H x T) /

Dimensions (W x H x D) / Dimensions (L x H x P) / Dimensiones (An x Al x P) / Dimensioni (L x A x P) / Afmetingen (b x h x d) / Wymiary (szer. x wys. x gł.)

215 mm x 365 mm x 251 mm

Gewicht UL 25 ACTIVE /

Weight UL 25 ACTIVE / Poids du UL 25 ACTIVE / Peso UL 25 ACTIVE / Peso UL 25 ACTIVE / Gewicht UL 25 ACTIVE / Masa UL 25 ACTIVE

7.53 kg

Gewicht UL 25 /

Weight UL 25 / Poids du UL 25 / Peso UL 25 / Peso UL 25 / Gewicht UL 25 / Masa UL 25

6.66 kg

Netzspannung /

Mains voltage / Tension secteur / Tensión de red / Tensione di rete / Netspanning / Napięcie sieciowe

220-240 V AC / 50 Hz

Maximale Leistungsaufnahme /

Maximum power consumption / Puissance maximale consommée / Consumo máximo de potencia / Consumo massimo di energia / Maximaal energieverbruik / Maksymalny pobór mocy

120 W

Leistungsaufnahme Standby /

Standby power consumption / Consommation en veille / Consumo en espera / Consumo di energia in standby / Stand-by stroomverbruik / Pobór mocy w trybie czuwania

< 0.5 W

Betriebs-Temperatur (von-bis) /

Operating temperature (from - to) / Température de fonctionnement (de - à) / Temperatura de funcionamiento (de - a) / Temperatura d'esercizio (da - a) / Bedrijfstemperatuur (van - tot) / Temperatura otoczenia podczas pracy (od - do)

0 °C – +45 °C

Lager-Temperatur /

Storage temperature (from - to) / Température de stockage (de - à) / Temperatura de almacenamiento (de - a) / Temperatura di conservazione (da - a) / Opslagtemperatuur (van - tot) / Temperatura przechowywania (od - do)

-20 °C – +60 °C

	Frequenzbänder Frequency bands Bande de fréquences / Potencia de transmisión / Bande di frequenza / Frequentiebanden / Pasma częstotliwości	Sendeleistung / Transmitting power / Puissance d'émission / Potencia de transmisión / Potenza di trasmissione / Zendvermogen / Moc nadawcza
Bluetooth®	2400 – 2483.5 MHz	4 dBm/2.5 mW
Funkverbindung Subwoofer oder Rücklautsprecher / Radio connection subwoofer or rear speakers / Liaison radio du caisson de basses ou des haut-parleurs arrière / Conexión de radio subwoofer o altavoces trasero / Connessione radio subwoofer o altoparlanti posteriore / Radioaansluiting subwoofer of achterluidspreker / Podłączenie subwoofera lub głośnika tylnego do radia	2405 – 2477 MHz	0 dBm/1 mW

Trademarks

© All trademarks are the property of their respective owners and any use by Lautsprecher Teufel is under licence.



Bluetooth® is a registered trademark of the Bluetooth SIG, Inc.



Dolby, Dolby Audio, and the double-D symbol are trademarks of Dolby Laboratories Licensing Corporation. Manufactured under license from Dolby Laboratories.



The terms HDMI, HDMI High-Definition Multimedia Interface, HDMI trade dress and the HDMI logos are trademarks or registered trademarks of HDMI Licensing Administrator, Inc.



Qualcomm aptX is a product of Qualcomm Technologies International, Ltd. Qualcomm is a trademark of Qualcomm Incorporated, registered in the U.S. and other countries, use has been authorised. aptX is a trademark of Qualcomm Technologies International, Ltd., registered in the U.S. and other countries, use of which has been authorised.



DAB+ as a further development of DAB („Digital Audio Broadcasting“) is used for the digital transmission of audio signals via antenna.

Copyright (c) 2016-2020 The Inter Project Authors. „Inter“ is trademark of Rasmus Andersson.

<https://github.com/rsms/inter>

This Font Software is licensed under the SIL Open Font License, Version 1.1.



Hereby, Lautsprecher Teufel GmbH declares that the radio equipment type ULTIMA 25 AKTIV is in compliance with Directive 2014/53/EU. The full text of the EU declaration of conformity is available at the following internet address:

www.teufel.de/konformitaetserklaerungen

www.teufelaudio.com/declaration-of-conformity

Teufel

Lautsprecher Teufel GmbH
Bikini Berlin, Budapester Str. 44
10787 Berlin (Germany)

www.teufelaudio.com

www.teufel.de

www.teufel.ch

www.teufelaudio.at

www.teufelaudio.nl

www.teufelaudio.be

www.teufelaudio.fr

www.teufelaudio.pl

www.teufelaudio.it

www.teufelaudio.es

Telefon

Deutschland +49 (0)30 217 84 217

Österreich +43 12 05 22 3

Schweiz +41 43 50 84 08 3

International 0800 200 300 40 (toll- free)

Telefax

+49 (0)30 / 300 930 930

Online-Support

www.teufelaudio.com/service
www.teufel.de/service

Kontaktformular

www.teufel.de/kontakt

Contact

www.teufelaudio.com/contact