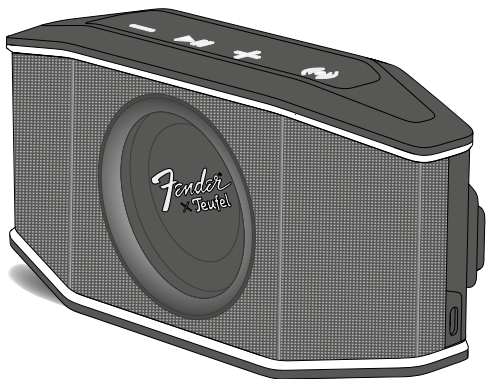


Fender
x **Teufel**



manuals.teufelaudio.com



FENDER[®] x TEUFEL **ROCKSTER[®] GO 2**

Bluetooth[®] speaker



Scope of delivery

Lieferumfang / Contenu de la livraison

Volumen de suministro / Ambito di consegna

Leveringsomvang / Zakres dostawy

Portable Bluetooth® speaker
with lithium battery

Tragbarer Bluetooth® Lautsprecher
mit Lithium Akku

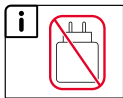
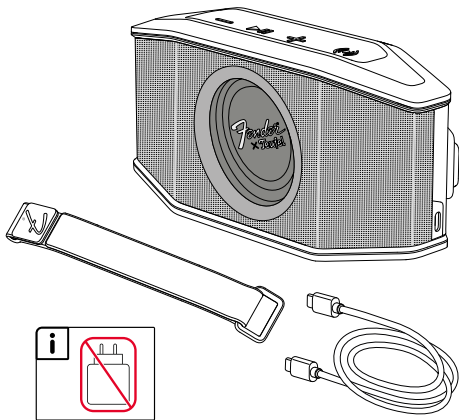
Haut-parleur Bluetooth® portable
avec batterie au lithium

Altavoz Bluetooth® portátil
con batería de litio

Altoparlante Bluetooth® portatile
con batteria al litio

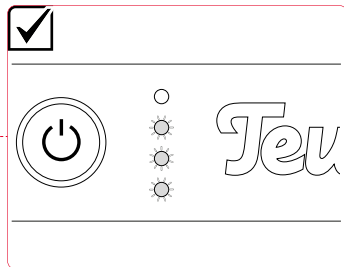
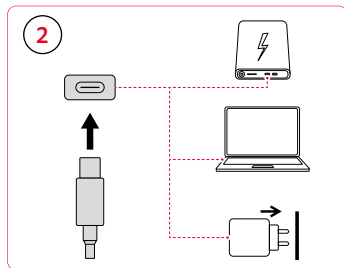
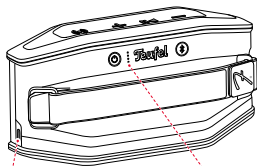
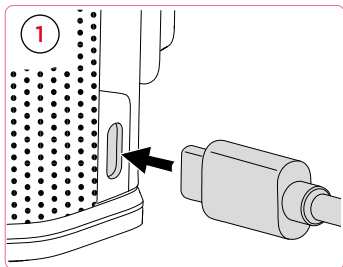
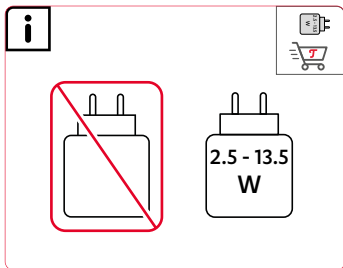
Draagbare Bluetooth® luidspreker
met lithiumbatterij

Przenośny głośnik Bluetooth®
z baterią litową





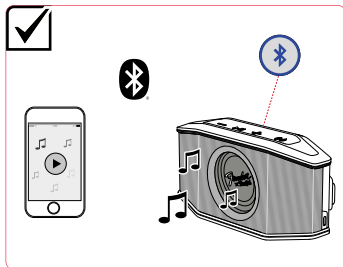
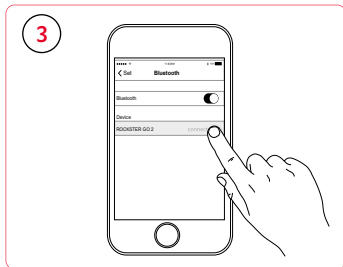
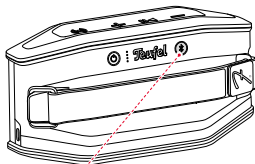
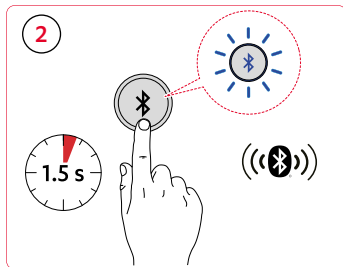
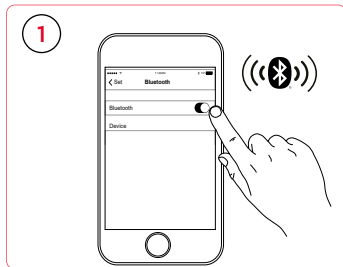
Charging
Aufladen / Charge
Carga / Ricarica
Opladen / Ładowanie





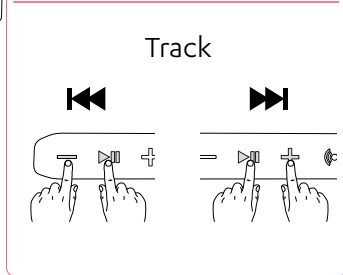
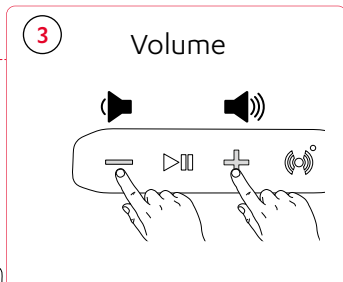
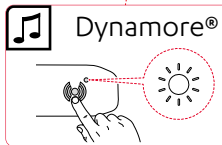
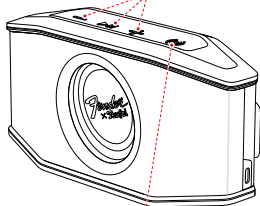
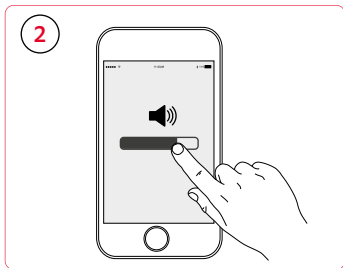
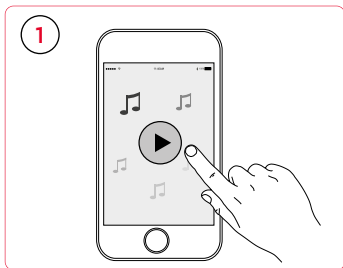
Bluetooth® connection

Bluetooth® Verbindung / Connexion Bluetooth®
Conexión Bluetooth® / Collegamento Bluetooth®
Bluetooth® verbinding / Połączenie Bluetooth®



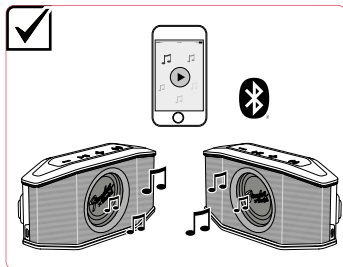
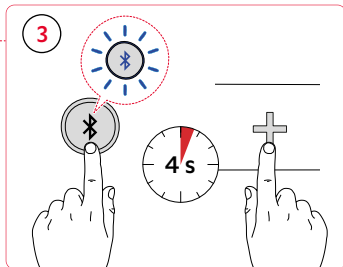
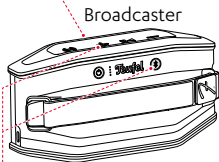
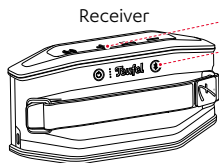
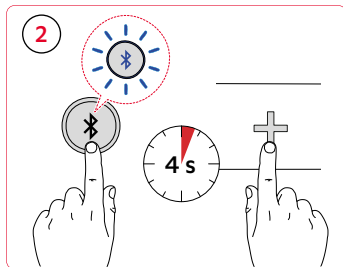
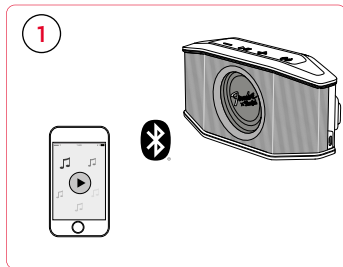


Volume and playback
Lautstärke und Wiedergabe / Volume et lecture
Volumen y reproducción / Volume e riproduzione
Volume en afspelen / Głośność i odtwarzanie





PARTY LINK





Technical data

Technische Daten / Données techniques

Datos técnicos / Dati tecnici

Technische gegevens / Dane techniczne

Dimensions (W x H x D) /

Abmessungen (B x H x T) / Dimensions (L x H x P) / Dimensiones (An x Al x P) / Dimensioni (L x A x P) / Afmetingen (b x h x d) / Wymiary (szer. x wys. x gł.)

8.3 in × 4.6 in × 2.5 in
(210 mm × 108 mm × 62.5 mm)

Weight /

Gewicht / Poids / Peso / Peso / Gewicht / Masa

1.62 lbs (735 g)

Charging voltage /

Ladespannung / Tension de charge / Tensión de carga / Tensione di carica / Oplaadspanning / Napięcie ładowania

5 V, max. 3 A

Required power of the charging unit (min. - max.) /

Erforderliche Leistung des Ladenezteils (Min. - Max.) / Puissance requise de l'alimentation de charge (min. - max.) / Potencia necesaria de la unidad de carga (mín. - máx.) / Potenza richiesta dell'unità di ricarica (min. - max.) / Benodigd vermogen van de lader (min. - max.) / Wymagana moc ładowarki (min. - maks.)



Protection class /

Schutzart / Indice de protection / Clase de protección / Classe di protezione / Beschermingsklasse / Klasa ochrony

IP67

Operating temperature (from - to) /

Betriebs-Temperatur (von-bis) / Température de fonctionnement (de - à) / Temperatura de funcionamiento (de - a) / Temperatura d'esercizio (da - a) / Bedrijfstemperatuur (van - tot) / Temperatura otoczenia podczas pracy (od - do)

32°F – 113°F
(0 °C – +45 °C)

Storage temperature (from - to) /

Lager-Temperatur / Température de stockage (de - à) / Temperatura de almacenamiento (de - a) / Temperatura di conservazione (da - a) / Opslagtemperatuur (van - tot) / Temperatura przechowywania (od - do)

-4°F – +140°F
(-20 °C – +60 °C)

Frequency bands /

Frequenzbänder / Bande de fréquences / Potencia de transmisión / Bande di frequenza / Frequentiebanden / Pasma częstotliwości

2400–2483.5 MHz

Transmitting power /

Sendeleistung / Puissance d'émission / Potencia de transmisión / Potenza di trasmissione / Zendervermogen / Moc nadawcza

6.9 dBm/4.9 mW

Trademarks

© All trademarks and brand names are the property of their respective owners.
Bluetooth® is a registered trademark of the Bluetooth SIG, Inc.
Other trademarks and trade names are those of their respective owners.

FCC statement

This device complies with Part 15 of the FCC Rules. Operation is subject to the following two conditions:

- (1) this device may not cause harmful interference, and
- (2) this device must accept any interference received, including interference that may cause undesired operation.

This equipment has been tested and found to comply with the limits for a Class B digital device, pursuant to Part 15 of the FCC Rules. These limits are designed to provide reasonable protection against harmful interference in a residential installation.

This equipment generates, uses and can radiate radio frequency energy and, if not installed and used in accordance with the instructions, may cause harmful interference to radio communications. However, there is no guarantee that interference will not occur in a particular installation. If this equipment does cause harmful interference to radio or television reception, which can be determined by turning the equipment off and on, the user is encouraged to try to correct the interference by one or more of the following measures:

- Reorient or relocate the receiving antenna.
- Increase the separation between the equipment and receiver.
- Connect the equipment into an outlet on a circuit different from that to which the receiver is connected.
- Consult the dealer or an experienced radio/TV technician for help.

This device complies with FCC radiation exposure limits set forth for an uncontrolled environment and it also complies with Part 15 of the FCC RF Rules. This equipment must be installed and operated in accordance with provided instructions and the antenna(s) used for this transmitter must be installed to provide a separation distance of at least 20 cm from all persons and must not be co-located or operating in conjunction with any other antenna or transmitter. End-users and installers must be provided with antenna installation instructions and consider removing the no-collocation statement. Caution!

Any changes or modifications not expressly approved by the party responsible for compliance could void the user's authority to operate the equipment.



Hereby, Lautsprecher Teufel GmbH declares that the radio equipment type FENDER® x TEUFEL ROCKSTER® GO 2 is in compliance with Directive 2014/53/EU. The full text of the EU declaration of conformity is available at the following internet address:

teufelaudio.com/declaration-of-conformity
teufel.de/konformitaetserklaerungen



Teufel Audio US, Inc.
16192 Coastal Highway
Lewes, Delaware 19958
USA

us.teufelaudio.com
teufelaudio.com
teufel.de
teufel.ch
teufelaudio.at
teufelaudio.nl

Phone/Telefon

International	0800 200 300 40 (toll- free)
Deutschland	+49 (0)30 217 84 217
Österreich	+43 12 05 22 3
Schweiz	+41 43 50 84 08 3

Online-Support

us.teufelaudio.com/support
teufel.de/service
teufelaudio.com/service

Contact/Kontaktformular

us.teufelaudio.com/contact
teufelaudio.com/contact
teufel.de/kontakt

Warranty

us.teufelaudio.com/warranty

Lautsprecher Teufel GmbH
Budapester Str. 44
10787 Berlin
Germany

teufelaudio.de
teufelaudio.fr
teufelaudio.pl
teufelaudio.it
teufelaudio.es